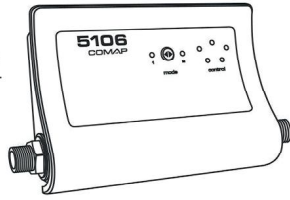


COMAP

5106

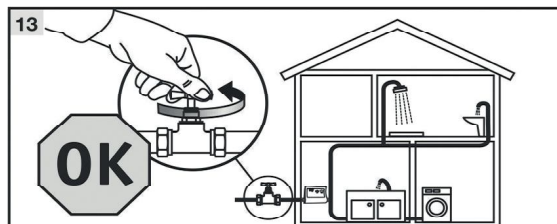
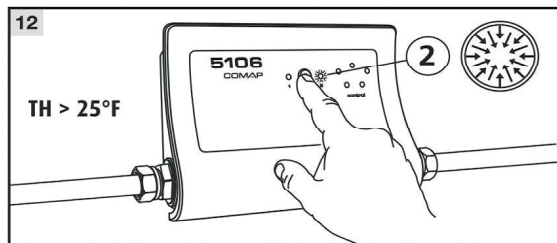
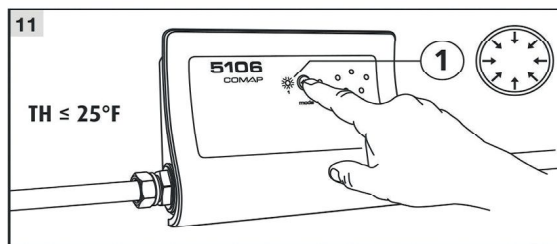
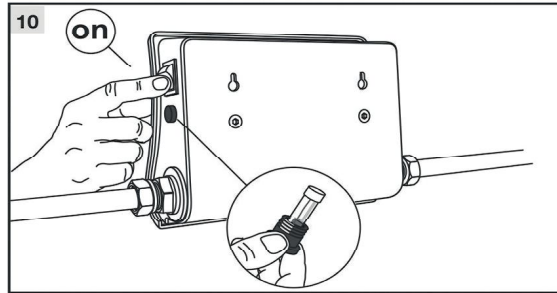
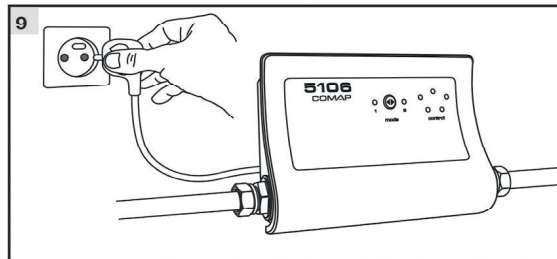
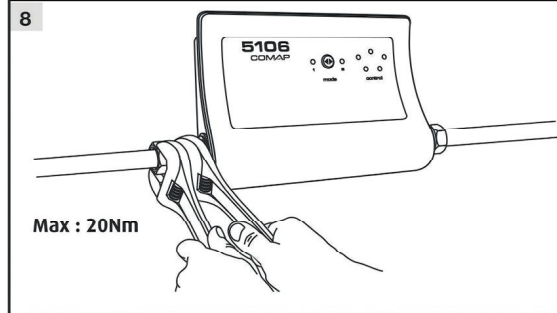
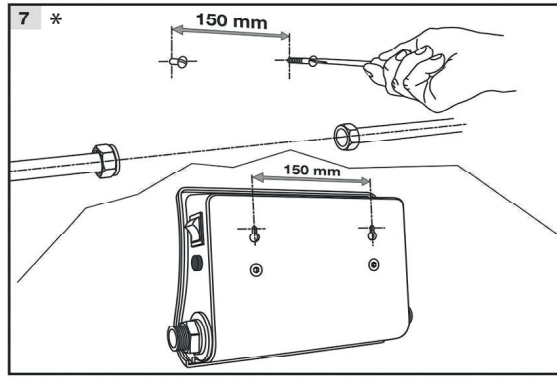
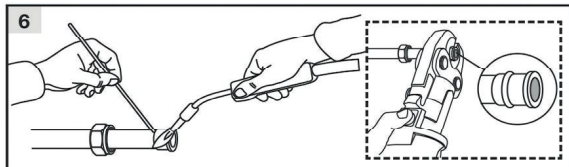
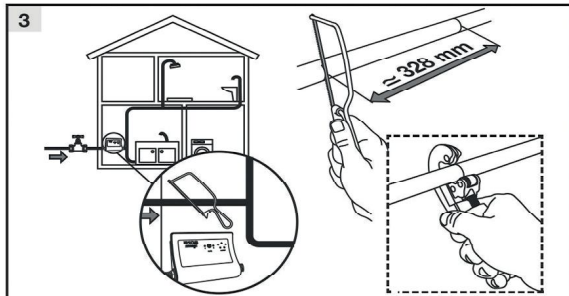
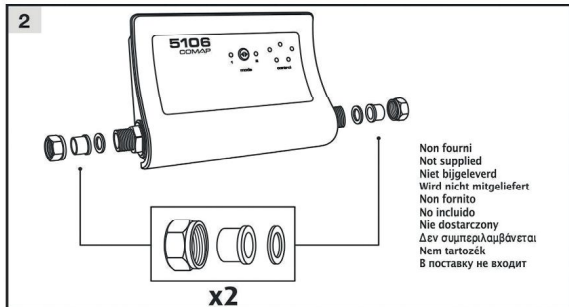
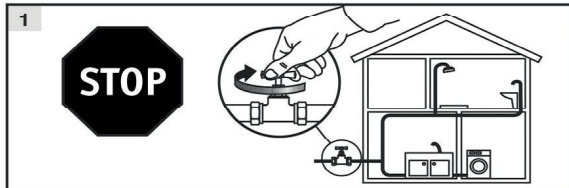
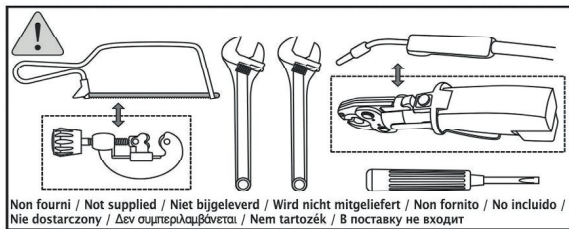
- FR** Anti-tartre électronique
- GB** Electronic scale preventer
- NL** Elektronische kalkbestrijder
- DE** Elektronischer Vasserenthärter
- IT** Anticalcare elettronico
- ES** Anti-sarro electrónico
- PL** Urządzenie elektroniczne zapobiegające powstawaniu osadu kamienia o wydajności
- GR** Ηλεκτρονική συσκευή προστασίας από επικαθίσεις αλάτων

- HU** Elektromos vízkövesedés gátló
- RU** Электронный аппарат предотвращения выпадения накипи в осадок



- FR** INSTALLATION GÉNÉRALE
- GB** GENERAL INSTALLATION
- NL** ALGEMENE MONTAGE
- DE** ALLGEMEINER EINBAU
- IT** INSTALLAZIONE GENERALE

- ES** INSTALACIÓN GENERAL
- PL** OGÓLNA INSTALACJA
- GR** ΓΕΝΙΚΗ ΕΓΚΑΤΑΣΤΑΣΗ
- HU** ÁLTALÁNOS FELSZERELÉS
- RU** КОМПЛЕКТАЦИЯ ДЛЯ УСТАНОВКИ



* **FR**
L'appareil peut être installé en position horizontale ou verticale. Aucun sens de passage d'eau à respecter.

* **GB**
The unit can be installed horizontally or vertically. No direction for water passage to respect.

* **D**
Das Produkt kann senkrecht oder waagrecht installiert werden. Kein Wasserdurchlaufsrichtung einzuhalten.